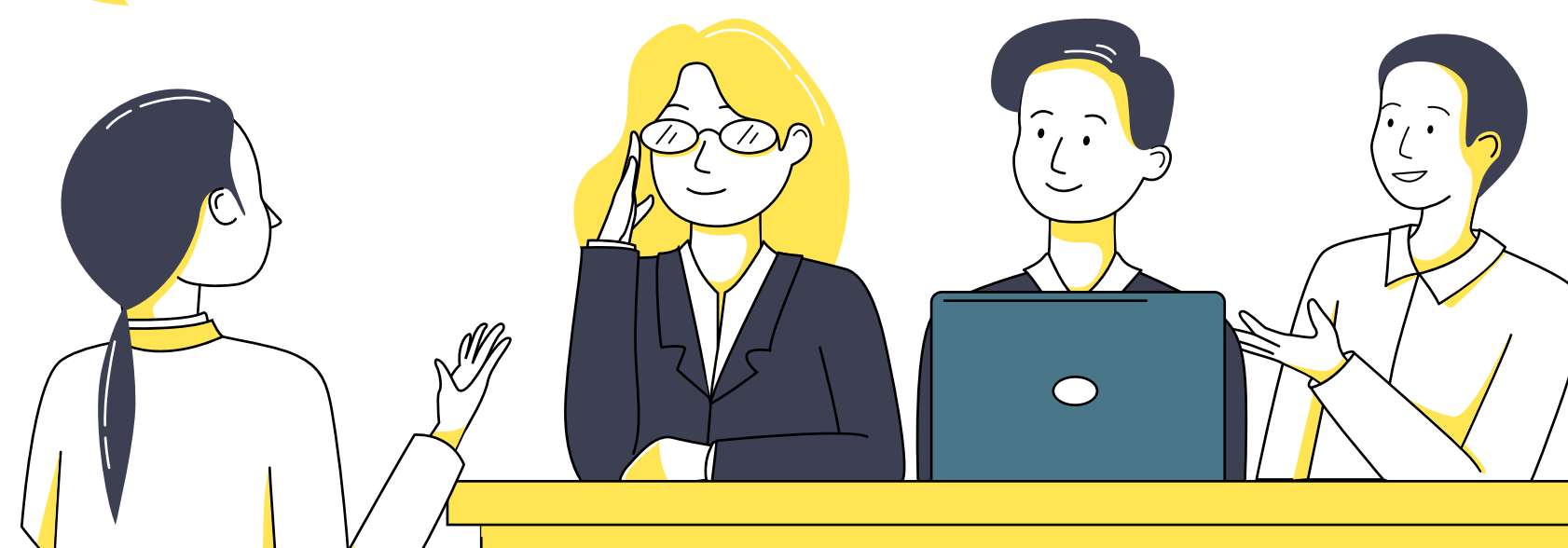
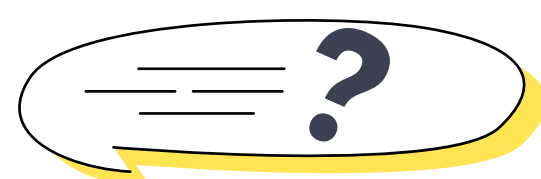


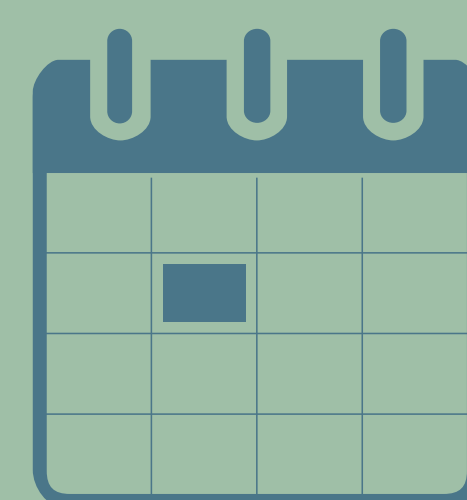
What questions should I ask in an interview?



Reminder: The type of questions you have decided to ask your interviewer should be focused on what you need to know to fully assess your future role.

1

What do the day-to-day responsibilities of the role look like?



2

What are your expectations for this role during the first 30 days, 90 days, year?



3

What and how is the caseload for social workers distributed here?



4

Is there training available for this role? If yes, what is the training period like for this particular role?



5

What type of candidates are you looking for in this role?

